

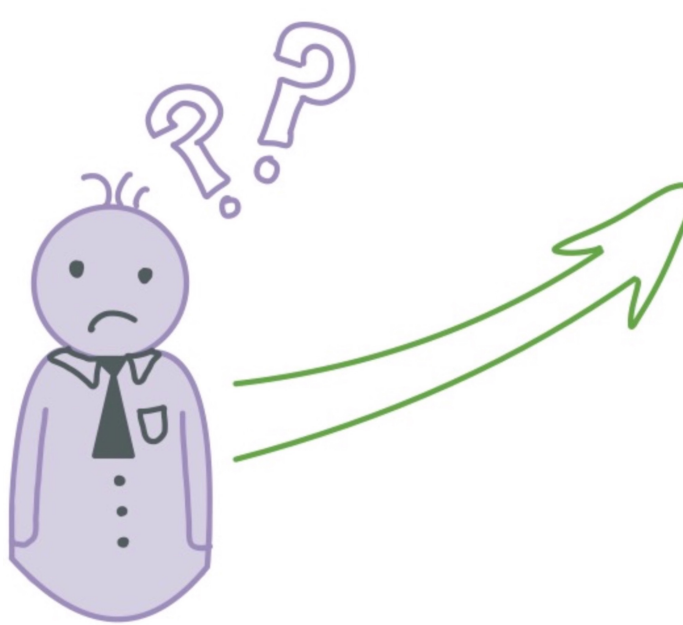
JANUARY // 2025

WORKFORCE PLANNING —NOW WITH— LABOR MARKET INTELLIGENCE

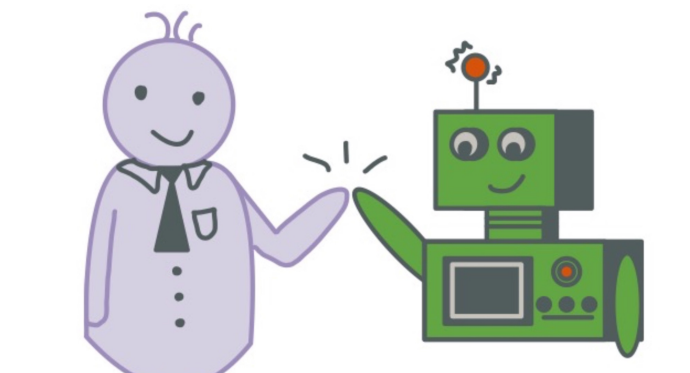
Expediting Your Company's Talent Acquisition and Management with Strategic Workforce Planning With Labor Market Intelligence

WHAT DOES SWP LOOK LIKE WITHOUT VEMO?

To address talent gaps, you need more than just intuition—you need to know where to find good talent at a competitive price.



Market intelligence is essential. But without the right tools, internal workforce planning and external market intelligence remain disconnected, with misaligned job and skill taxonomies.



Even the best market intelligence is ineffective unless it aligns seamlessly with your organization.

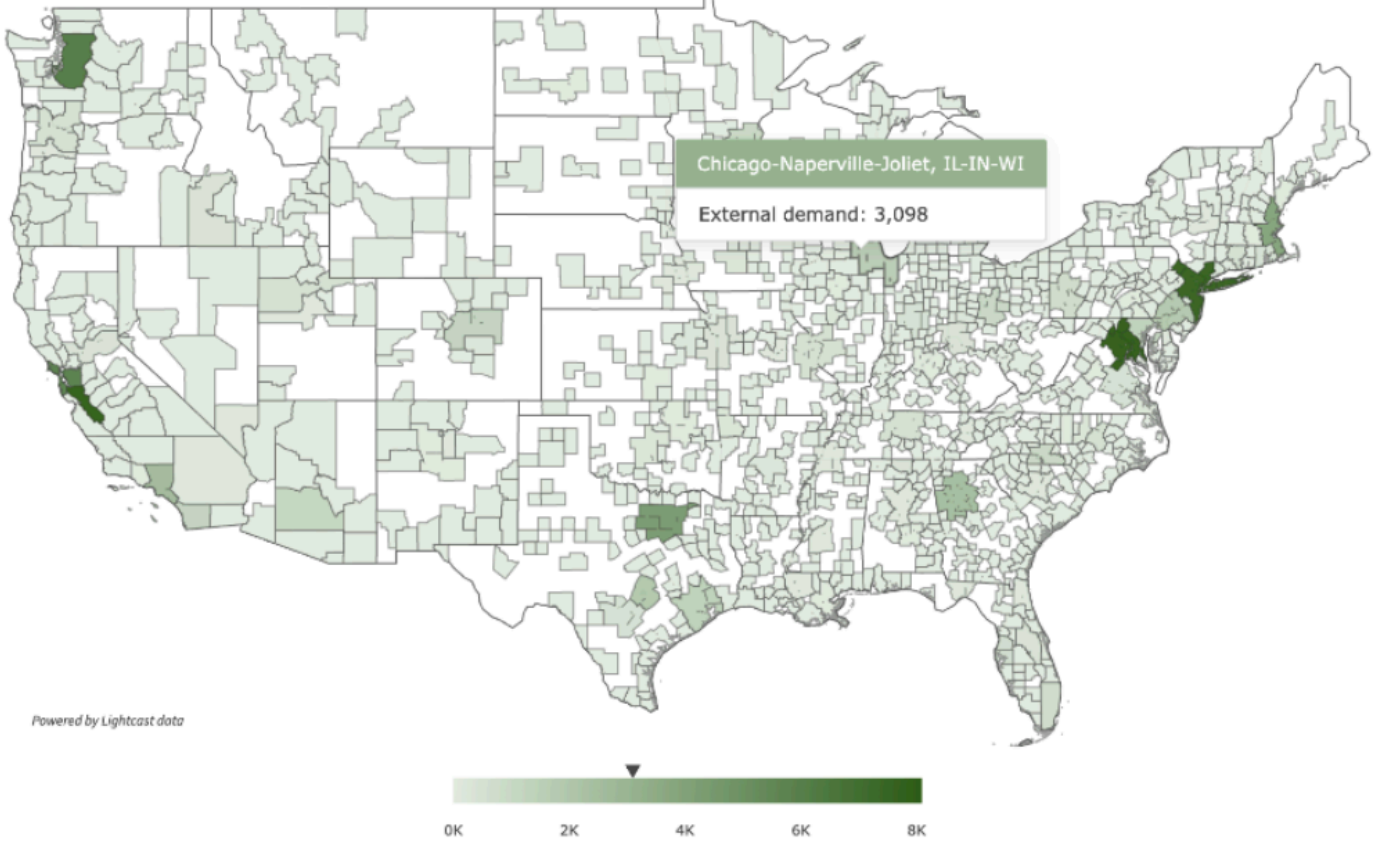
USING VEMO'S GAP INTELLIGENCE DASHBOARD...

Details
For Engineering > Machine Learning Engineering
in Chicago-Naperville-Joliet, IL-IN-WI:
Moderate Demand
Average Supply
Top 10 talent competitors:
Discover Financial Services
JPMorgan Chase
University of Chicago
Amazon
AbbVie
Epsilon
W.W. Grainger
Uline
Capital One
Argonne National Laboratory

| Gap Intelligence | | | |
|------------------|--------------------------------------------------|-----------------|-------------------|
| 2025 | Engineering > Machine Learning Engineering (MTE) | External demand | |
| 5.1 | 42.7 | 10.4 | 0 |
| EMPLOYEE HIRES | MOBILITY IN | CONTRACT HIRES | AVERAGE BASE RATE |

You are able to *easily compare* across all jobs and locations:

- Internal Gaps: Build, Buy, Borrow
- Average Base Rate
- External Demand
- External Supply
- Demand-Supply Ratio
- Compensation
- Diversity



**WHEN YOU PARTNER WITH
VEMO,**
you will fully integrate internal
workforce planning with external
labor market intelligence. This allows
you to:

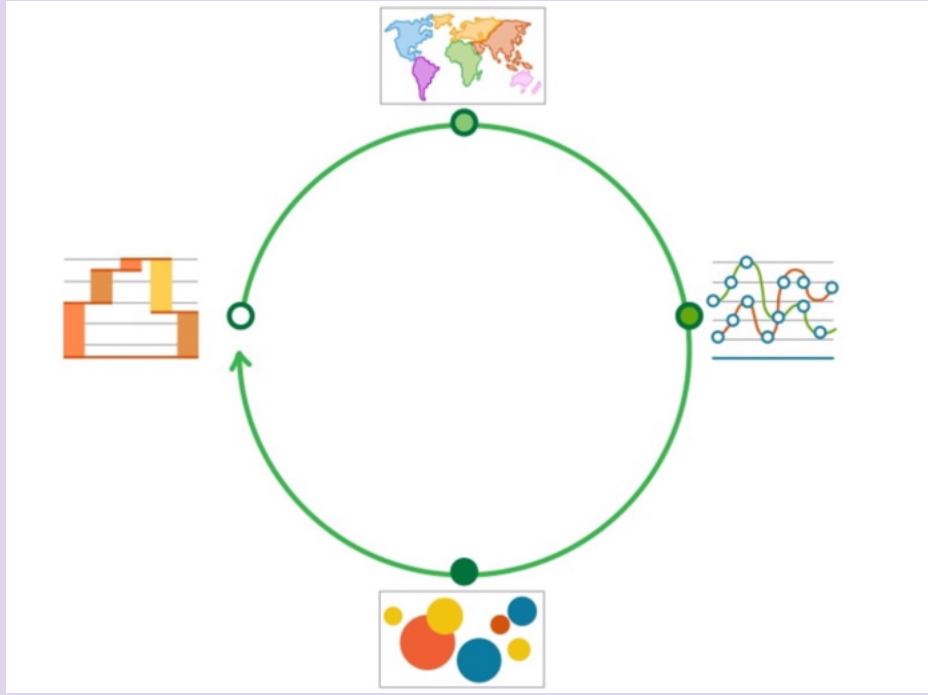
- Predict and understand your internal workforce gaps and compare them to market demand and supply
- Modify your company's build-buy-borrow and location strategy based on both internal needs and external market intelligence
- Implement optimized hiring and development lead times to onboard the right talent on time

LABOR MARKET INTELLIGENCE FOR TANGIBLE RESULTS IN TALENT ACQUISITION AND MANAGEMENT

Vemo's new Gap Intelligence feature is a joint SWP and Strategic Workforce Management solution, designed to seamlessly align with your company's data to deliver real-time, actionable talent insights.



[Book a Demo!](#)



ABOUT US

Vemo combines powerful software with expert consulting to help clients tackle the unique challenges of workforce planning, workforce analytics, and resource management. [Continue Reading.](#)



3525 Del Mar Heights Road #663
San Diego, CA 92130

Copyright © 2008-2025 | Vemo | All rights reserved | [Privacy Policy](#)

To modify how you receive these emails: [update your preferences](#) or [unsubscribe from this list](#).