

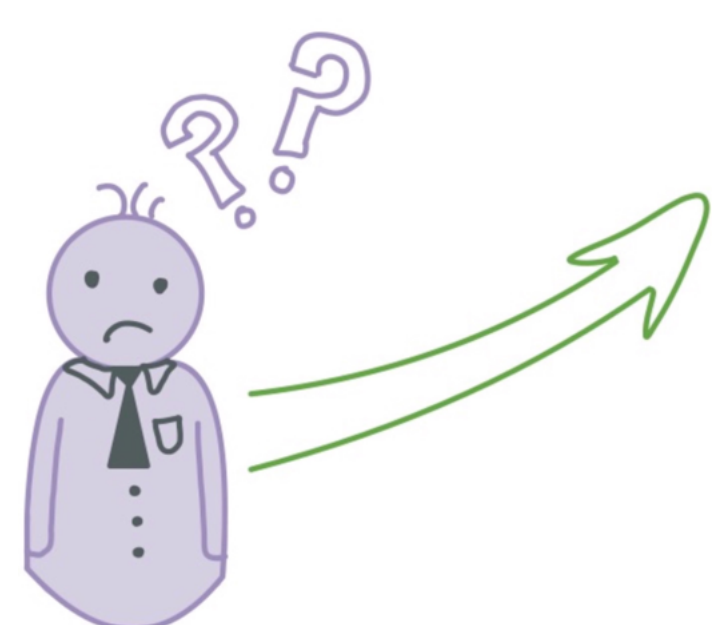
JANUARY // 2025

# WORKFORCE PLANNING —NOW WITH— LABOR MARKET INTELLIGENCE

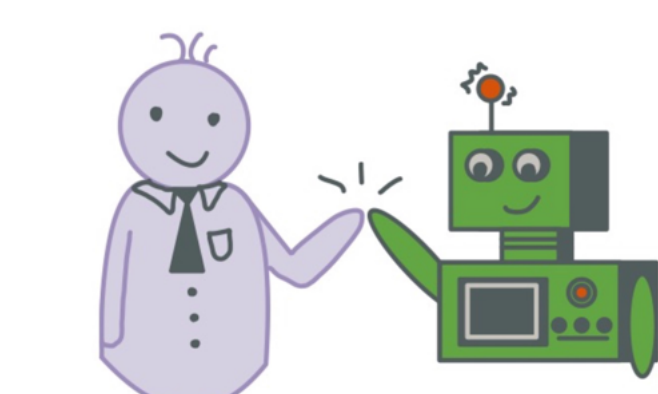
## Expediting Your Company's Talent Acquisition and Management with Strategic Workforce Planning With Labor Market Intelligence

### WHAT DOES SWP LOOK LIKE WITHOUT VEMO?

To address talent gaps, you need more than just intuition—you need to know where to find good talent at a competitive price.



Market intelligence is essential. But without the right tools, internal workforce planning and external market intelligence remain disconnected, with misaligned job and skill taxonomies.



Even the best market intelligence is ineffective unless it aligns seamlessly with your organization.

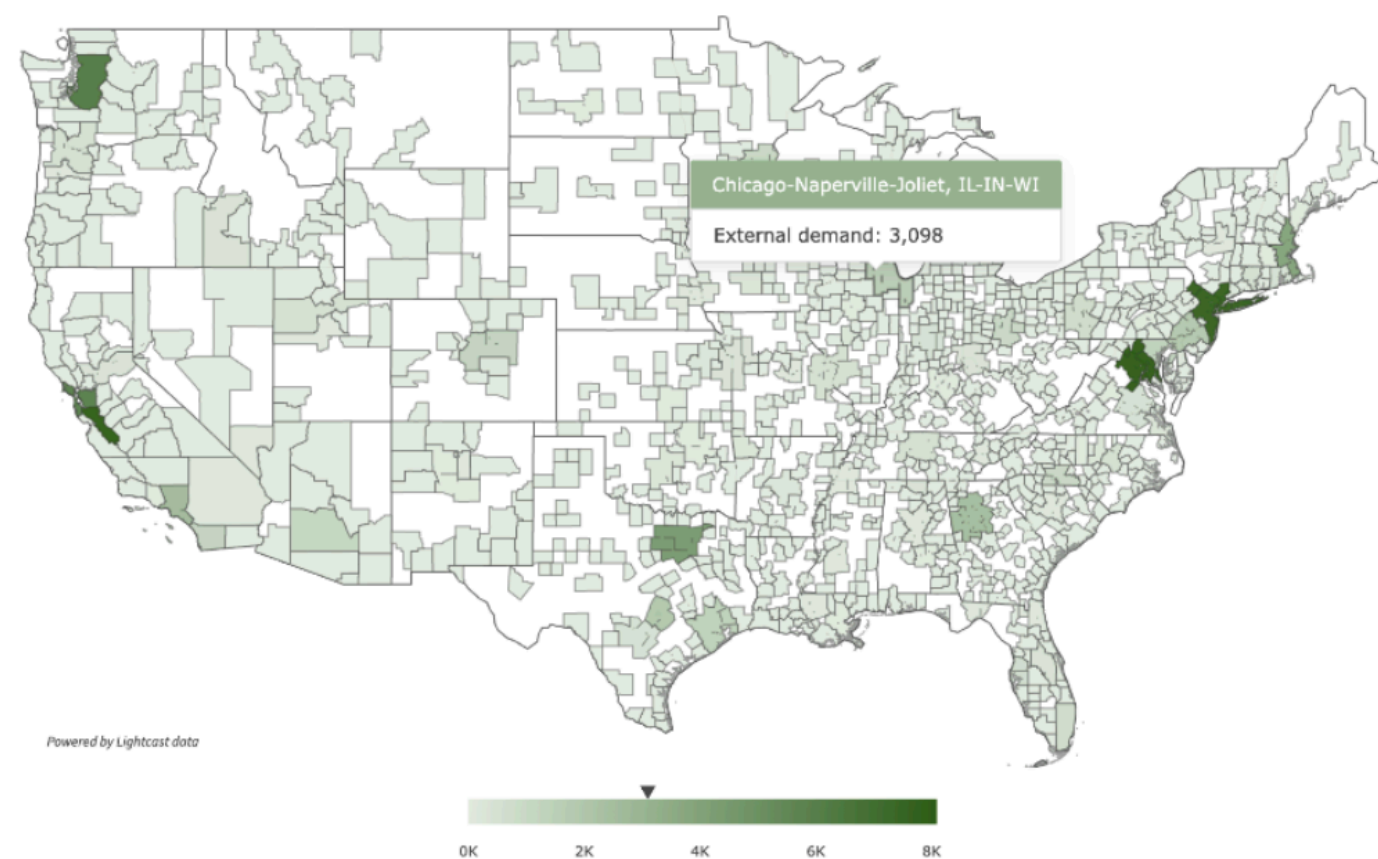
### USING VEMO'S GAP INTELLIGENCE DASHBOARD...

**Details**  
For Engineering > Machine Learning Engineering in Chicago-Naperville-Joliet, IL-IN-WI:  
Moderate Demand  
Average Supply  
**Top 10 talent competitors:**  
Discover Financial Services  
JPMorgan Chase  
University of Chicago  
Amazon  
AbbVie  
Epsilon  
W.W. Grainger  
Uline  
Capital One  
Argonne National Laboratory

Gap Intelligence			
2025	Engineering > Machine Learning Engineering (MTE)	External demand	
5.1	42.7	10.4	0
EMPLOYEE HIRES	MOBILITY IN	CONTRACT HIRES	AVERAGE BASE RATE

You are able to *easily compare* across all jobs and locations:

- Internal Gaps: Build, Buy, Borrow
- Average Base Rate
- External Demand
- External Supply
- Demand-Supply Ratio
- Compensation
- Diversity



### WHEN YOU PARTNER WITH VEMO,

you will fully integrate internal workforce planning with external labor market intelligence. This allows you to:

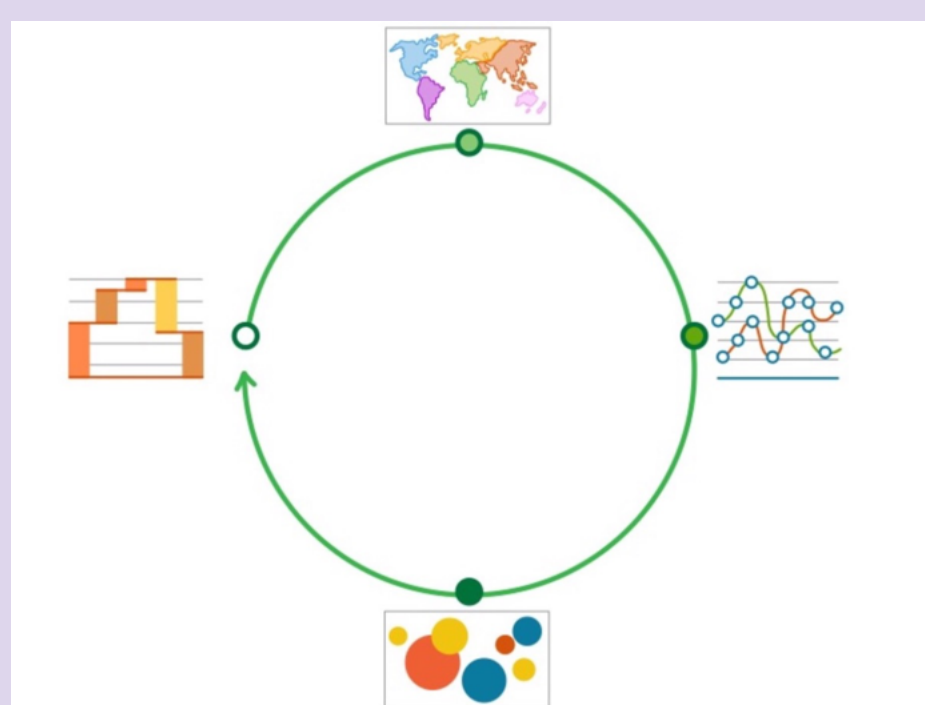
- Predict and understand your internal workforce gaps and compare them to market demand and supply
- Modify your company's build-buy-borrow and location strategy based on both internal needs and external market intelligence
- Implement optimized hiring and development lead times to onboard the right talent on time

### LABOR MARKET INTELLIGENCE FOR TANGIBLE RESULTS IN TALENT ACQUISITION AND MANAGEMENT

Vemo's new Gap Intelligence feature is a joint SWP and Strategic Workforce Management solution, designed to seamlessly align with your company's data to deliver real-time, actionable talent insights.



[Book a Demo!](#)



### ABOUT US

Vemo combines powerful software with expert consulting to help clients tackle the unique challenges of workforce planning, workforce analytics, and resource management. [Continue Reading.](#)



3525 Del Mar Heights Road #663  
San Diego, CA 92130

Copyright © 2008-2025 | Vemo | All rights reserved | [Privacy Policy](#)

To modify how you receive these emails: [update your preferences](#) or [unsubscribe from this list](#).